

SMARTLIGHT **TRUCK&BUS**

The first in the industry
contactless solution
for heavy-duty trucks
wheel alignment system

*fast and highly
precise
contactless
measurement*

Full measurement
and adjustment



OUR HISTORY

1997

The first TechnoVector wheel aligner was produced.

2005

Production of the TechnoVector 5 CCD wheel aligner with PRRC (Precise Rolling and Runout Compensation) technology.

2009

The company released the first 3D wheel aligner for cars: TechnoVector 7 with the WideScope technology.

2012

Introduction of the mobile wheel aligner TechnoVector 6 with 3D Free Motion technology allowing smaller workshops to take advantage of 3D technology.

2013

The first worldwide 3D wheel aligner for truck production started

2016

The five-camera 3D mobile wheel aligner for cars & trucks and the three-camera mobile aligner for cars were released. The five-camera 3D mobile wheel aligner for cars & trucks and the three-camera mobile aligner for cars were released.

2018

Manufacturing of the new and unique Contactless wheel aligner TechnoVecotor 8, with SmartLight technology started.

2019

Production of modern and high-tech machines for automobile wheel balancing began.

2021

The world premiere of a contactless solution for heavy-duty truck alignment and express angles check.

CONTACTLESS



accelerate your business

Product Features

- Contactless measurement
- Wheel adapter and target installation NOT required
- Measurements accomplished within seconds
- Extra space in front and at the back of the car NOT required
- Measurements on the floor allowed
- Automatic sliding posts for rear wheels control
- Powerful PC for high measurement speed
- Fits for shops 4.9 and more meters wide
- Maximum wheel diameter – 1.4 m
- Wheelbase from 1.8 to 13 m*

*can be adapted individually to a client

CONTACTLESS

Full measurement and adjustment

fast and precise contactless measurement

Full measurement of 5 axles within 50 seconds



Front static columns

Rear automatic movable columns for multi-axle measurement and adjustment

Configuration for pit

A contactless machine vision system with several video cameras and a smartlight projection system to perform live 3D scanning of each wheel

4 posts equipped with 10 video cameras and 4 projection systems

A contactless machine vision system



CONFIGURATION

Fast and accurate contactless measurement

OUR MACHINES

The system includes 4 short measuring towers, equipped with video cameras and projection systems, and trolleys with side rails of different length

2 rear measuring towers slide along the rails to aim the cameras at the wheels of the vehicle. Each pair of video cameras and a projector process the corresponding wheel position at the time

The system allows to receive all wheels simultaneous compensation and accurate live-data-reading

- Extra space in front and at the back of the car NOT required

- Maximum wheel diameter – 1.4m

- Wheelbase from 1.8 to 13m

Configuration for BUS



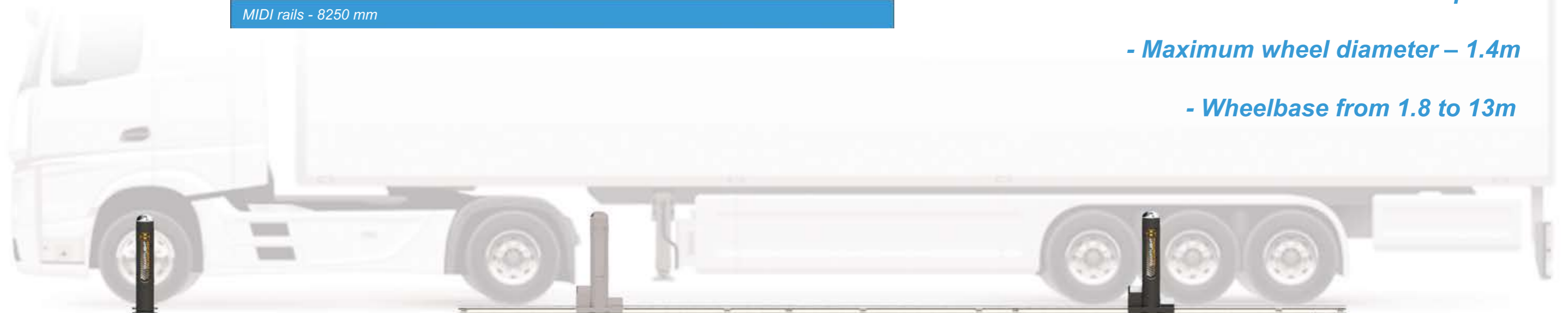
MINI rails - 3000 mm

Configuration for TRUCK



MIDI rails - 8250 mm

Configuration for TRAILER



MAXI rails - 10500 mm

TechnoVector SOFTWARE

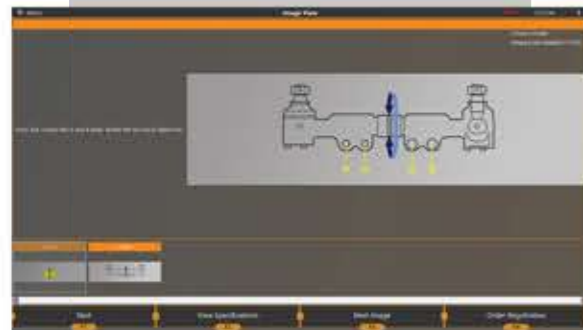
The TechnoVector software is a powerful and modern application with all the tools necessary for fast and easy wheel alignment



The Techno Vector software runs on a PC and uses the **Windows 11** operating system



Model information screen



Vehicle configuration screen (Truck)



Vehicle configuration screen (Trailer)



Drive-in in reverse selected

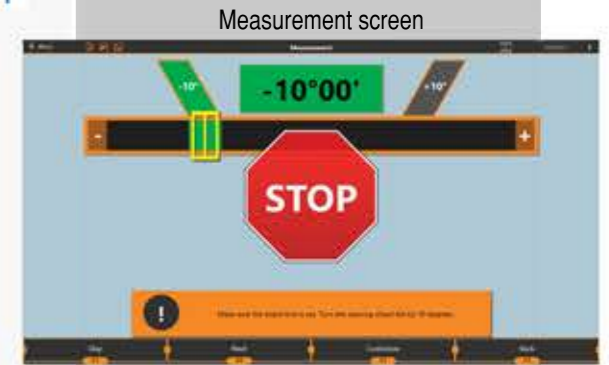
Continuously tracks wheel positions and updates the information on screen

Big font and colored value state indication help you adjust the vehicle from afar



Measured values are always compared to the vehicle's specs

Fast navigation throughout the software



Measurement screen



Adjustment screen - general view



Adjustment screen - single axle view



Report screen

Database

includes comprehensive wheel alignment data truck and car database with **over than 60 000 vehicle models**

Adjustment diagrams and images

Add custom models to your database in case the model you are interested in is missing

Free updates on the TechnoVector website



Mobile App



WHAT'S IN THE BOX

Computer Cabinets

P series



T series



S series



Computer cabinet includes

- PC with an Intel processor and a Windows 11 operating system
- 21.5"+ widescreen monitor
- VESA bracket for the monitor
- Printer (optional equipment)
- Remote control (2.4Ghz connection)
- Tablet

Available colours



RAL 7011

RAL 5010

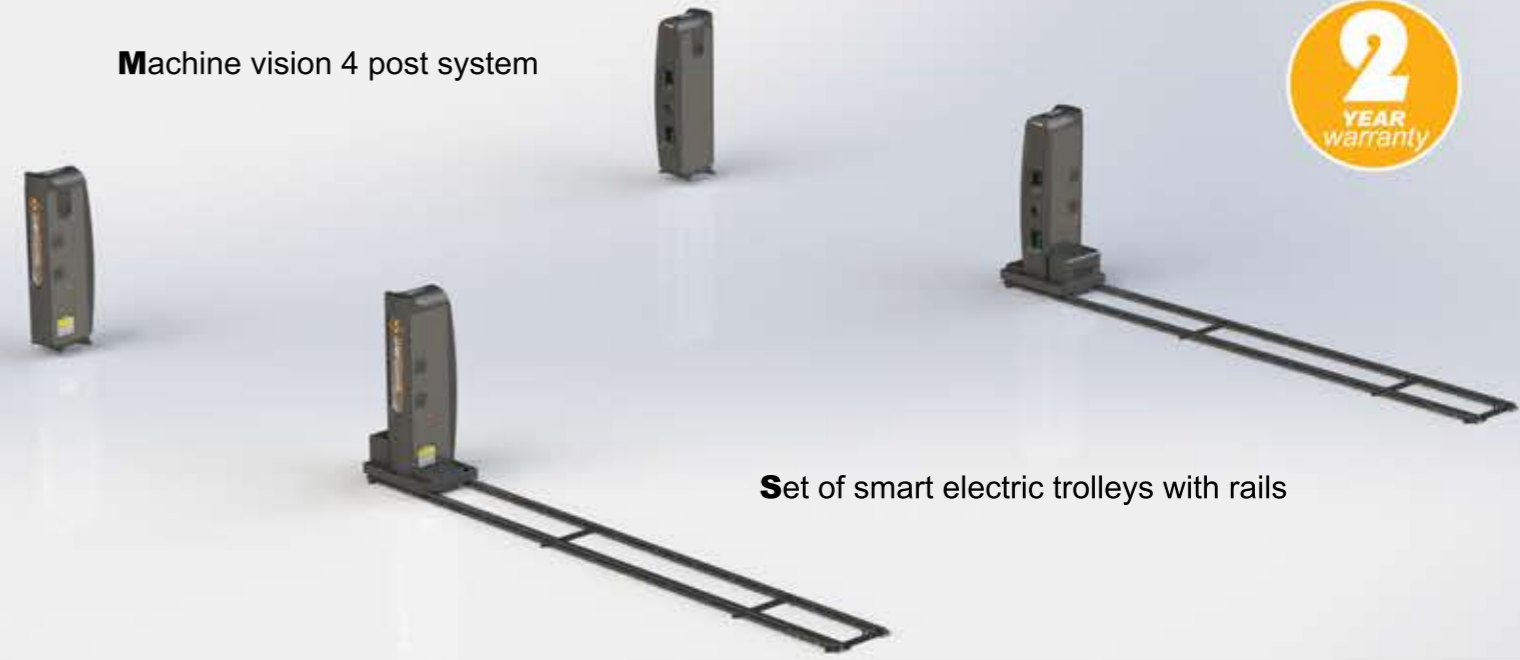
RAL 3002

P series

Wide cabinet with four tool drawers and printer shell



Machine vision 4 post system



Set of smart electric trolleys with rails

Standard accessories

1. Machine vision 4 post system	1
2. Set of smart electric trolleys with rails	1
3. Computer cabinet	1
4. Steering wheel holder	1
5. Brake lock	1
6. Set of turn 2 tables	1
7. Manual	1

Optional accessories

1. Set of Turn 2 Tables	1
2. Set of rolling platforms	1
3. Probe target	1
4. Electronic laser probe	1
5. The 32" monitor	1
6. Steering wheel leveler	1
7. Steering wheel inclinometer	1

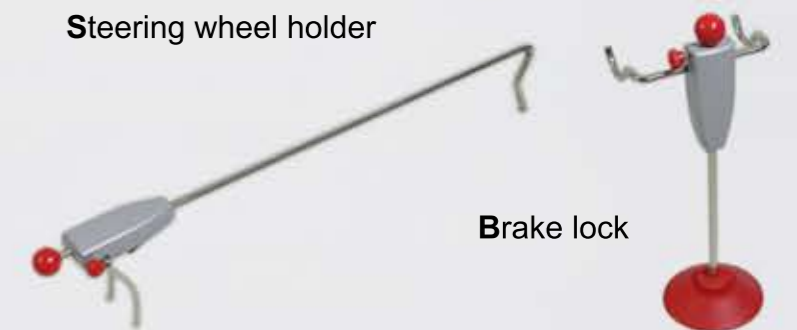
Set of turn 2 tables



Set of rolling platforms (Optional equipment)



Steering wheel holder



Brake lock



Remote control



Precision in Motion



Your distributor: